

CSE:RCLF

Bur Property

Asset Summary

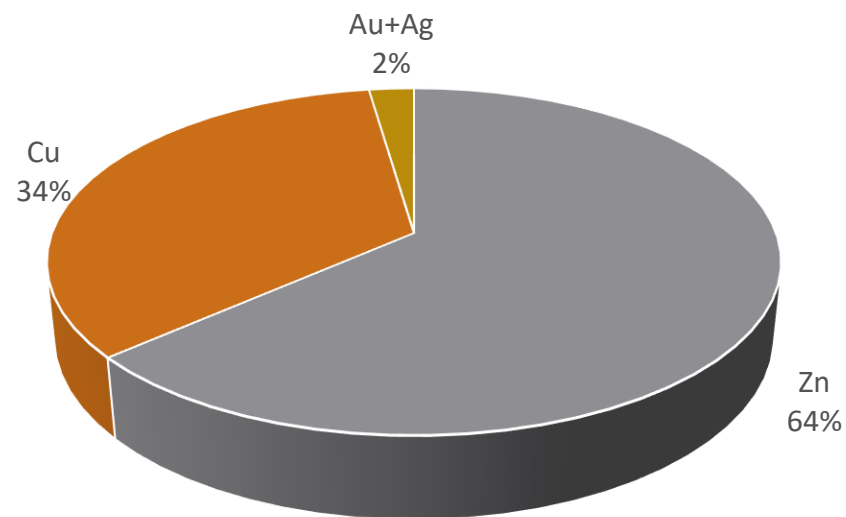
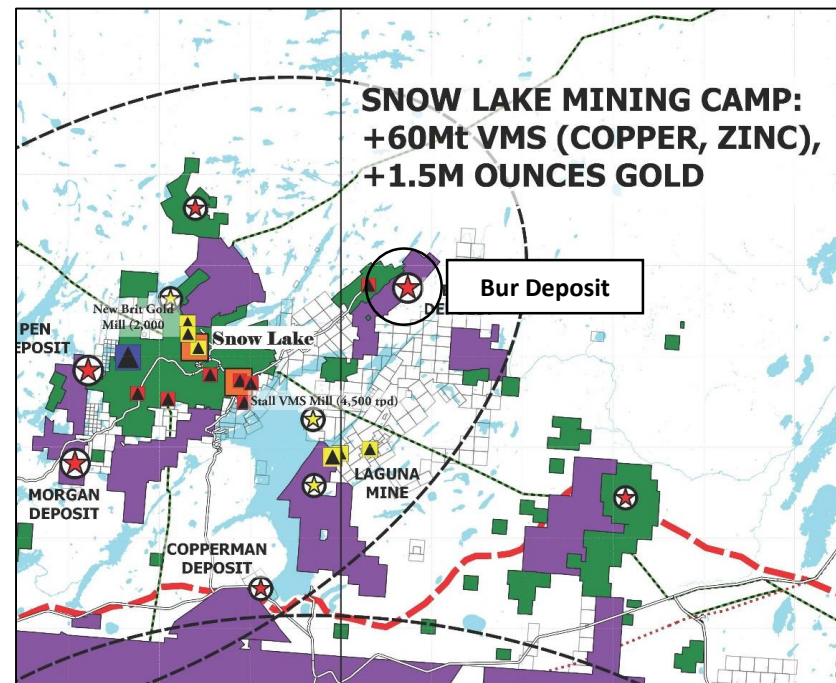
Ownership • Option agreement with Hudbay Minerals whereby Rockcliff can earn a 100% interest by spending ~C\$3M over four years (~C\$1M spent to date)

Location • 3,979 ha property strategically located ~22 km NE of Hudbay's Snow Lake copper-zinc concentrator and ~28 km from the town of Snow Lake

Bur Deposit • High-grade, zinc-copper rich, stratiform VMS deposit
 • Historical deposit thickness ranging from 0.3 m to 5.0 m thick
 • Open in multiple directions, ~800 m along strike and to depths of ~1,000 m below surface

Current • 11,000 meters of drilling planned by Q3/19

Work Plan • Target of 5.0 Mt at world-class zinc-copper grades
 • Assess copper-rich zone within deposit



Bur Deposit	Tonnes	Grade	Contained
100% basis	(Mt)	(ZnEq %)*	(M lbs ZnEq)*
TOTAL	1.35	13.67	308.9

*In-situ Zinc-Equivalent (ZnEq) calculations based on US\$2.35/lb Cu, US\$1.15/lb Zn, US\$1,300/oz Au and US\$20.00/oz Ag.

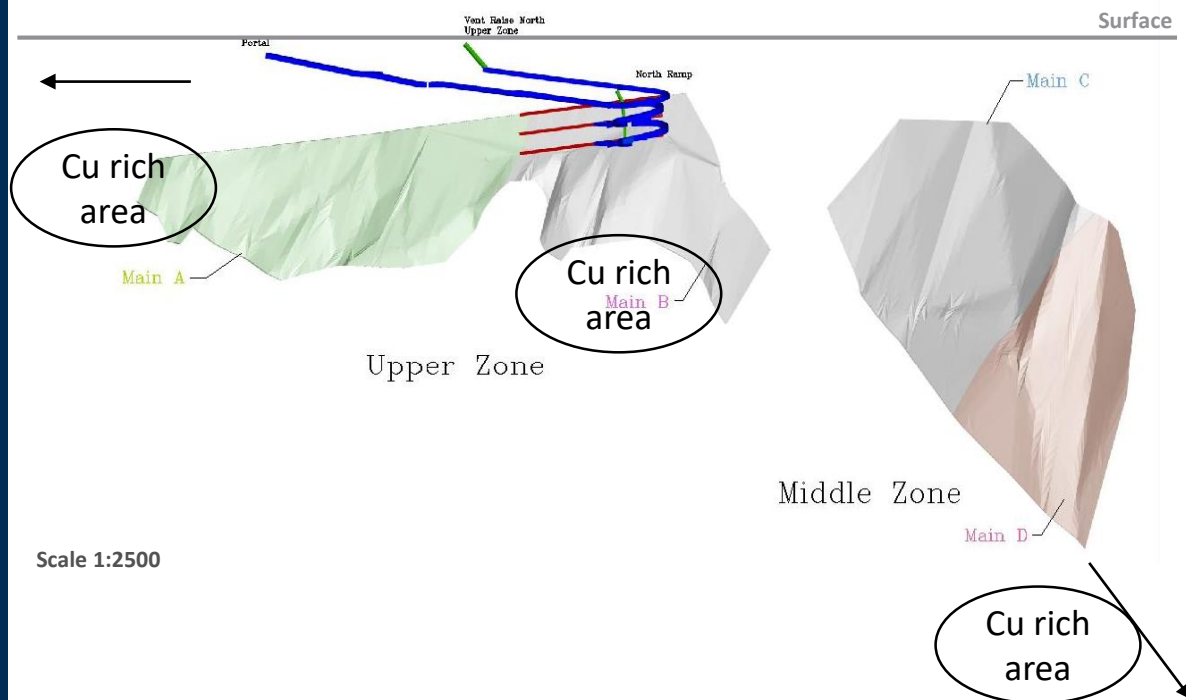
Source: Bur Project, Snow Lake Manitoba, Canada NI 43-101 Technical Report (October 1, 2007) not filed on Sedar

Bur Property

High-Grade Zinc and Copper Deposit

- Portal completed in 2007
- Recently completed drill highlights include:
 - 18.0% ZnEq over 5.7 m
 - 20.1% ZnEq over 2.7 m
 - 15.0% ZnEq over 4.4 m
- High grade mineralization extends over 800 m along strike immediately south of deposit within an ~8 km long mineralized horizon
- 10,000 m planned in Q3/19
- Conceptual target: >5.0 Mt at +13% ZnEq (+5% CuEq)

High-grade zone at surface (looking north-west)



Historic resource: ~1.4 Mt @ 12.8% ZnEq (4.9% CuEq)*

*Please refer to the cautionary information on current resource estimates in the appendix for the Bur Deposit